

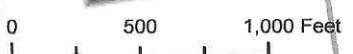
- Boat Ramp / Universal Access
- Beach
- Boat Ramp
- Chapel
- Fishing / Universal Access
- Office
- Parking
- Picnic Shelter
- Playing Field
- Picnic Tables
- Restrooms
- Scenic Overlook
- Paved Road
- Gravel Road
- Paved Multi-Use
- Gravel Path

Welcome to Colt State Park  
 Hope Street (Route 114), Bristol, RI 02809  
 (401) 253-7482

Open Year Round Sunrise to Sunset

No Fee for Entry  
 \$5/day Picnic Table

Picnic Table Numbers







1

2

32

3

4

31

5

6

30

7

8

29

9

10

28

11

12

27

13

14

15

16

26

**Area One**

25

**Restroom**

24

23

**Shelter 1**

22

21

20

17

18

19





**Area Two**

**34**

**33**

**35**

**36**

**38**

**37**

**39**

**40**

**Shelter Two**

**Restroom**

**Chapel**

**55**

**53**

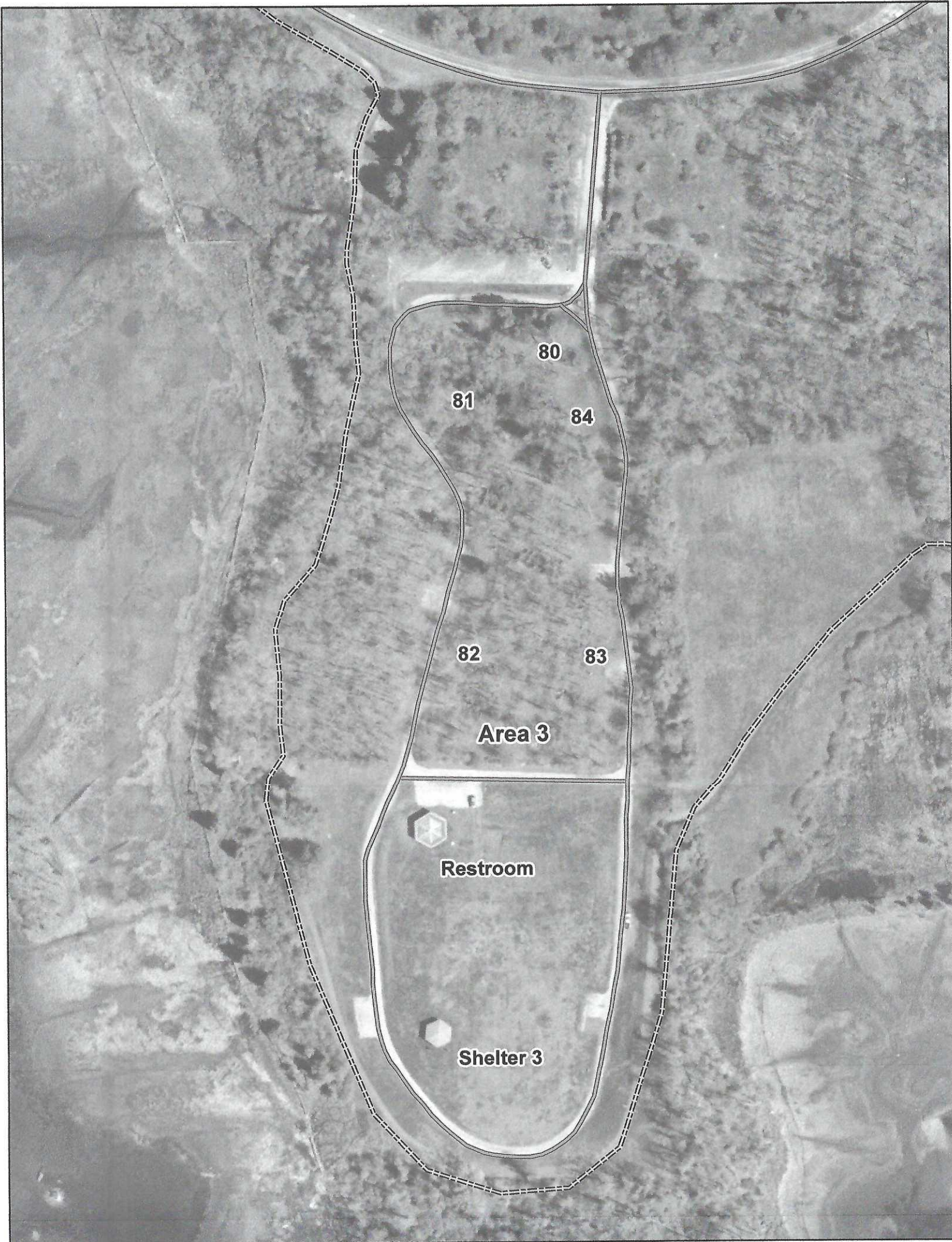
**51**

**54**

**52**

**50**





80

81

84

82

83

Area 3

Restroom

Shelter 3